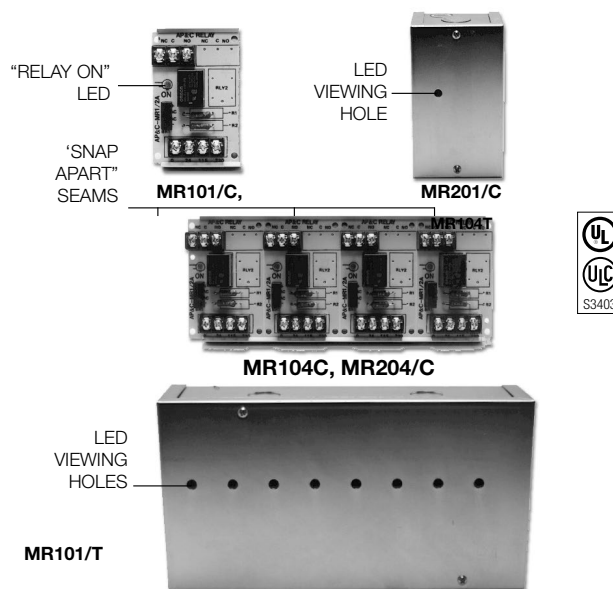




LIFE SAFETY &amp; INCIDENT MANAGEMENT

# Multi-Voltage Control Relays

## MR100 & MR200 Series



### Overview

The MRSeries Multi-Voltage Control Relays offer SPDT or DPDT 10 Amp contacts which may be operated by one of four input control voltages. A single relay may be energized from a voltage source of 24 Vdc, 24 Vac, 115 Vac or 230 Vac by wiring to appropriate input terminals.

Each relay position contains a red light emitting diode (LED) which indicates the relay coil is energized. Relays may be “snapped apart” from a standard four-module assembly and used independently.

These devices are ideal for applications where local contacts are required for system status, remote contacts for control of electrical loads and general purpose switching. They are suitable for use with HVAC Temperature Control, Fire Alarm, Security, Energy Management, and Lighting Control Systems.

### Standard Features

- Each relay position may be energized from one of four input voltages
- Each relay position contains a red LED which illuminates when the coil is energized. This provides a timesaving convenience when checking an installed system; no metering is required.
- Single, dual or triple relay modules may be “snapped apart” from a standard four-position master
- SPDT or DPDT relays available
- Available in dustproof metal enclosures with LED viewing port
- Track mounting hardware to facilitate installation in standard cabinets
- UL recognized relays rated at 10 million mechanical operations
- ULI listed as control unit accessory



LIFE SAFETY & INCIDENT MANAGEMENT

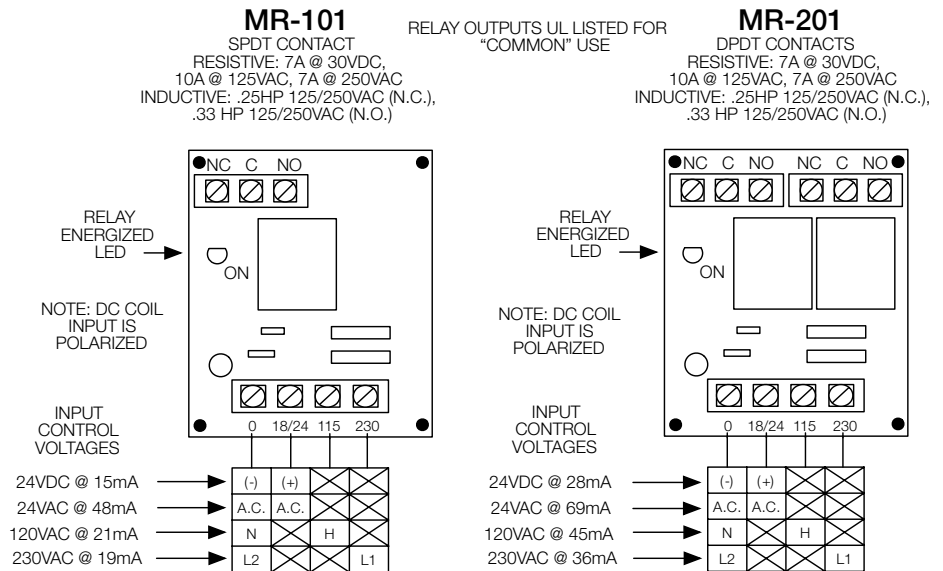
#### Contact us

Phone: 800-655-4497 (Option 4)  
Email: [edwards.fire@carrier.com](mailto:edwards.fire@carrier.com)  
Website: [edwardsfiresafety.com](http://edwardsfiresafety.com)

8985 Town Center Pkwy  
Bradenton, FL 34202

© 2020 Carrier  
All rights reserved.

## Installation Wiring



## Specifications

### Power Requirements

MR101 Position	15 mA @ 24 Vac, 24 Vdc, 115 Vac, 230 Vac
MR201 Position	35 mA @ 24 Vac, 24 Vdc, 115 Vac, 230 Vac

### Relays

MR101	UL Recognized SPDT
MR201	UL Recognized SPDT
Enclosure	18 ga. CRS, plated with 1/2 in conduit knockouts (top and bottom)
Contact Rating	10 Amps @ 115 Vac
Ambient Temperature	-58°F to 185°F (-50°C to 85°C)
Approvals	UL Listed control unit accessory

### Dimensions

MR101/T and MR201/T	3.0 H x 2.125 W x 1.5 D in (76 H x 54 W x 38 D mm)
MR104T and MR204/T	3.0 H x 8.5 W x 1.5 D in (76 H x 216 W x 38 D mm)
MR101/C and MR201/C	6.125 H x 3.25 W x 2.5 D in (156mm H x 83mm W x 64 D mm)
MR104C and MR204/C	6.125 H x 9.5 W x 2.5 D in (156 H x 241 W x 64 D mm)

## Ordering Information

### Model Description

MR101/T	Single SPDT relay with LED and track mounting hardware
MR101/C	Single SPDT relay with LED mounted in metal enclosure
MR104T	Four-position SPDT relay with LEDs and track mounting hardware
MR104C	Four-position SPDT relay with LEDs mounted in metal enclosure
MR201/T	Single DPDT relay with LED and track mounting hardware
MR201/C	Single DPDT relay with LED mounted in metal enclosure
MR204/T	Four-position DPDT relay with LEDs and track mounting hardware
MR204/C	Four-position DPDT relay with LEDs mounted in metal enclosure